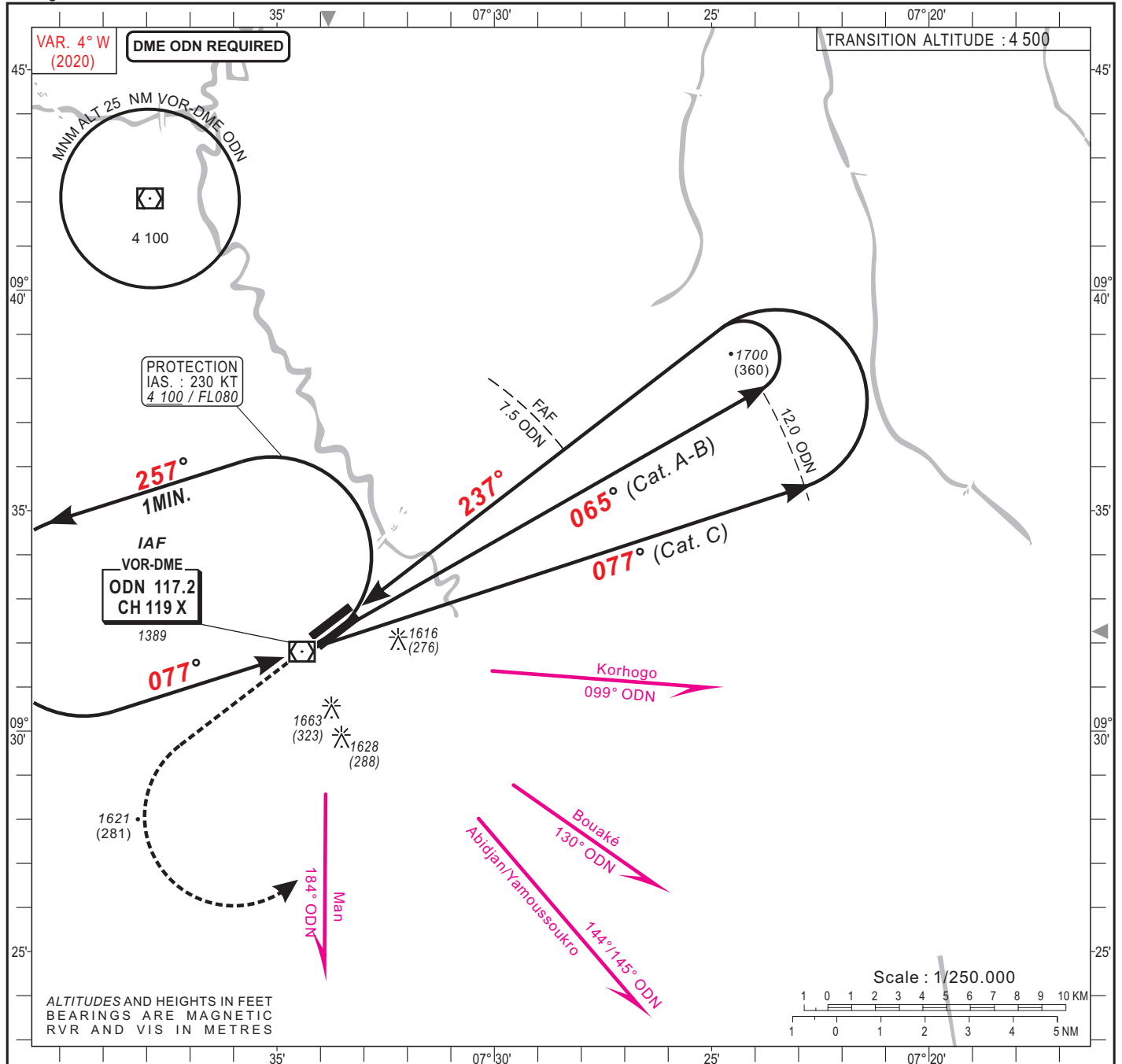
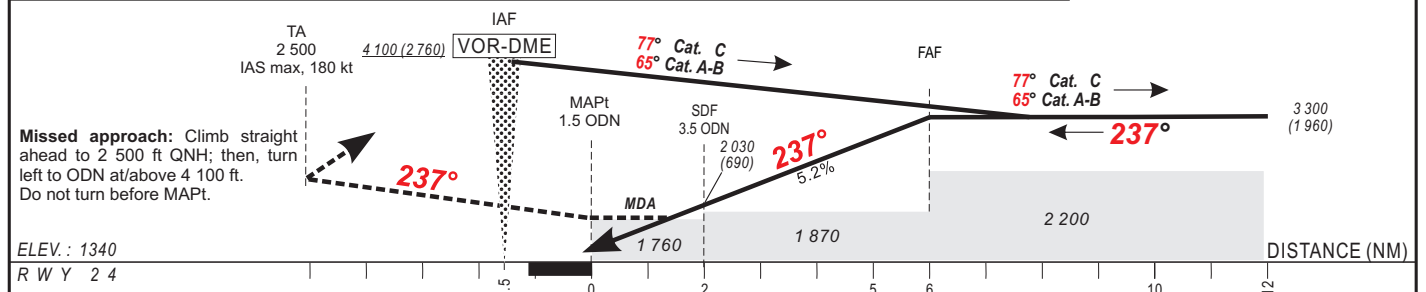


HEIGHTS RELATED TO THRESHOLD 24 ELEVATION



| | | | | | | | | |
|--------------------------|-------|--|---|-------|-------|-------|-------|-------|
| Distance to ODN DME (NM) | FAF | | 2 | 3 | 4 | 5 | 6 | 7 |
| Altitude (ft) | 3 300 | | - | 1 870 | 2 190 | 2 510 | 2 820 | 3 140 |



| CAT | VOR-DME | | | CIRCLING (1) | | | RVR for take-off: CAT A - B - C : 400 |
|-----|------------|------------|------|--------------|------------|------|---|
| | OCA (OCH) | MDA MDH | RVR | OCA (OCH) | MDA MDH | VIS | |
| A | 1756 (416) | 1760 (420) | 1500 | 1958 (591) | 1960 (600) | 1500 | Timing FAF / THR 6.0 NM KT MIN SEC KT MIN SEC |
| B | 1756 (416) | 1760 (420) | 1500 | 1958 (591) | 1960 (600) | 1600 | |
| C | 1756 (416) | 1760 (420) | 1800 | 2057 (690) | 2060 (690) | 2400 | |
| D | | | | | | | |

Notes : - (1) Daytime only - OCH and MDH AAL

AMDT 03/22 : Magnetic variation & bearing, AFIS frequency